

Triangle

AUGUST/SEPTEMBER 2021

# HOME

DESIGN & DECOR®

*The*  
KITCHEN & BATH  
*Issue*

*PLUS:*  
FORM MEETS  
FUNCTION

ON THE MARKET:  
FLAIR & FINESSE

# FLAIR & FINESSE

FROM THE PRETTIEST FIXTURES TO THE NEWEST FORMS, HERE'S TO MAKING YOUR KITCHEN AND BATH BOTH BEAUTIFUL AND PRACTICAL.

WRITTEN BY ANNE MARIE ASHLEY  
PRODUCED BY ASHLEY HOTHAM COX



## SEEING STARS

Known for their brilliant use of brass and semi-precious and natural stones, Lee Addison Lesley and Kat Weeks Mulford, co-founders of jewelry and home hardware company Addison Weeks, have rebranded their stunning interiors arm into Modern Matter. Newest to the line, the Cosmos Collection pays homage to the celestial globe, offering an eclectic selection of hardware, including ball knobs and rings, hooks, and decorative backplates. Each piece is available in beautiful polished brass, polished nickel, and now in burnished brass. [modern-matter.com](http://modern-matter.com)



## TOAST TO GOOD TASTE

The Quintessential quick grab-and-go breakfast just got a sleek makeover.

The Express Finish Toaster from Café takes form and function to a whole new

level. Known as the high-end custom line of appliances from GE, Café has put design in the front seat, from stovetops and refrigerators to this compact toaster with all the bells and whistles. Choose from matte white, matte black, or stainless steel, and enjoy extra-wide slots for toast, an LED display that lights up when your toast is ready, and an express toast mode that produces perfect toast in about a minute. [cafeappliances.com](http://cafeappliances.com)



## ULTIMATE FLEX

What if you could have a refrigerator with ultimate flexibility and multiple options at every turn? Sounds like a dream come true—and it is, with the Bespoke 4-Door Flex Refrigerator from Samsung. Customizable with eight different colors and two different finishes (stainless steel and glass front), the 4-Door Flex can be mixed and matched to create a one-of-a-kind appliance that suits your needs. Multiple function options like a built-in water dispenser and a built-in water pitcher, two types of ice, fridge-to-freezer conversion, high-touch antimicrobial technology, and flexible freshness make this fridge a true workhorse in any kitchen [ferguson.com](http://ferguson.com)



CLOCKWISE FROM TOP RIGHT: COURTESY OF CAFÉ APPLIANCES;  
COURTESY OF SAMSUNG; COURTESY OF MODERN MATTER.

## FLOWER CHILD

Riley Sheehey, a former elementary school art teacher and now a full-time watercolor artist, has taken the world by storm with her whimsical style and botanical prints. From surface design and hand-painted objects to collaborations with interior designers, retailers, and clothing designers, Sheehey's artwork is inspired by vintage patterns, antique botanical prints, children's literature, and the natural world. Her latest collaboration with interiors atelier Fleur has resulted in a collection of unique and feminine mirrors that bring out your inner little girl.

[fleurhome.com](http://fleurhome.com)

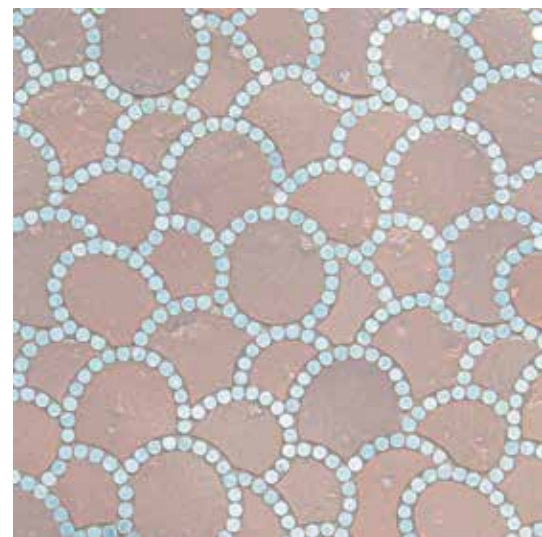


## DOUBLE TAKE

Lighting design house The Urban Electric Co. is known for original designs and expert craftsmanship, all inspired by art, fashion, history, architecture, and pop culture. Each design is hand-crafted and finished in Charleston, South Carolina. And myriad customizable options make their products, like the Nyhavn Double Sconce, a go-to for design enthusiasts. With thirty-seven finish combination options and four shade types, the possibilities for a perfect match are endless. The versatility of the Nyhavn ranges from sweet and traditional to bold and modern. [urbanelectric.com](http://urbanelectric.com)

## LONDON CALLING

Founded by mother-daughter team Anna and Nathalie Callis, London Basin Company was forged from a love of interior design and statement-making pieces. The show-stopping basin collections are inspired designs from around the world. Intricate patterns, delicate details, hand-crafted creations, and even scalloped edges are the hallmarks of London Basin Company. Newest to the line is the Mini Collection, smaller versions of the full-sized counterparts, perfect for tiny water closets and cramped spaces. The Mini Aubrey, shown here, has a porcelain basin with a basket-weave textured finish inspired by the pretty woven rattan and seagrass baskets found across Asia. [londonbasincompany.com](http://londonbasincompany.com)



## WOMAN'S WORLD

Femme & Function, the newest collection from mosaic designer and manufacturer New Ravenna, is an ode to women. The line of handcrafted mosaics pays homage to the innovation of women throughout history, with twenty designs in stone and glazed basalto. Inspired by the legacy of women pioneers in functional art, the collection depicts interpretations of quilting, pottery, embroidery, weaving, and textiles with textured materials like tumbled stones and metallic-glazed basalto sprinkled with a dimensional palette that captures the essence and interplay of woven goods and embroidery. [newravenna.com](http://newravenna.com)





## FROM THE GROUND UP

Luxury bathroom brand Maison Valentina combines high-end design with ultimate functionality to create an elevated experience in residential bathrooms. From furniture to basins, every piece is thoughtfully crafted to generate a sensory experience, and the Colosseum Floor Mirror is no exception. The full-length mirror supported by a Nero Marquina marble base is accented with brass trim and built-in polished brass tubes. The oblong-shaped mirror rotates a full 360 degrees, making it flexible, functional, and beautiful. [maisonvalentina.net](http://maisonvalentina.net)

## MIDNIGHT RUN

Crisp, clean, and modern, the Kirsí faucet in Midnight Chrome from Newport Brass is an innovative take on the classic chrome finish. Midnight Chrome is a specially engineered finish featuring a blackish-blue tint over a chrome base. The special finish includes a ten-year finish warranty to ensure a beautiful look that can last a lifetime. [rjacobsfph.com](http://rjacobsfph.com)



## ART DECO DELIGHT

The Lorino sconce designed by Julie Neill is a timeless piece perfect for many applications.

"For this collection, I was interested in geometric shapes and their relationships to one another," Neill says. "For example, on the Lorino series, I wanted to create a faceted gem-like form using a layout of interrelated squares and triangles." With three classic finishes, two glass finish options, and an Art Deco shape, the Lorino highlights Neill's innovative design and forward thinking. [capitolightinggallery.com](http://capitolightinggallery.com)



## NATURAL BEAUTY

Wabi-sabi is the Japanese concept of finding beauty in everything, especially imperfections or incompleteness in the world and nature around us. Mosaïque Surface, the leader in mosaic fabrication in North America, is using the concept of wabi-sabi in their latest collection, Rêve d'Orient. Inspired by the beauty of Eastern Asian culture, the line celebrates the organic flaws found in nature. Materials such as stones, metals, and glass are pieced together in the spirit of wabi-sabi to create a masterpiece that highlights the natural imperfections. [mosaïquesurface.com](http://mosaïquesurface.com)

